

Support system for people with disabilities in Vienna –

Social benefits, regulations & major institutions

Ivana Veznikova, BA

Wien, 16.05.2011

Die Koordinationsstelle Jugend – Bildung – Beschäftigung
wird finanziert und beauftragt durch:



Major social protection schemes

Koordinationsstelle
Jugend - Bildung - Beschäftigung

- **Social insurance:**
 - health, accident & pension
- **Universal schemes:**
 - Not based on income or employment status
 - Example: Long-term care allowance (Pflegegeld)
- **Social compensation schemes:**
 - Victims of crime, war or other military conflicts, vaccination-related dysfunctions
- **Means-tested benefits:**
 - Dependent on property, income
 - Example: means-tested minimal income (“Bedarfsorientierte Mindestsicherung” - former social assistance allowance)

Division of tasks

Responsibilities are divided between the federal and regional level

- Federal responsibility:
 - Example: social compensation schemes

- Regional/local responsibility:
 - Example: most social services, housing

- In other cases responsibilities are shared or given by specific target groups
 - Example: long-term care allowance

- **Law on the enhancement of equal opportunities, 2010**

„People with disabilities have physical, intellectual, mental or sensory impairments not related to aging and are permanently and considerably disadvantaged in their development or major life areas such as professional training, gainful employment or social life“

- Other regulations highlight certain aspects

Major support systems I

Koordinationsstelle
Jugend - Bildung - Beschäftigung

- **Public Employment Service (AMS):**
 - Major employment agency
 - Target group: fit for work, specific support only

- **Federal Social Office (BSB):**
 - Subordinate agency of the ministry of social affairs & consumer protection
 - Main focus: vocational inclusion of people w. disabilities
 - Target group: 50% disability, more extensive support

- **Vienna Social Fund (FSW):**
 - City of Vienna taxes, 150 partner organizations
 - Main focus: health care and social services
 - Target group: not (yet) capable of working

Support systems

Public Employment Service (AMS)

Services related to job search
Training courses
Organizational subsidies

General population

Federal Social Office (BSB)

Services related to job search
Training courses
Organizational subsidies
Aids for people with disabilities

For people with disabilities only

Vienna Social Fund (FSW)

Occupational therapy
Mobility & Transport
Residential groups
Assisted living
Aids for people with disabilities

Public Employment Service (AMS)

Koordinationsstelle
Jugend - Bildung - Beschäftigung

- All major services available to people with disabilities
- People with disabilities possessing a principle capacity and readiness to work
- Selective support in the form of:
 - Counseling
 - Short-term training
 - Subsidies

Vienna Social Fund (FSW) I

Koordinationsstelle
Jugend - Bildung - Beschäftigung

-
- ❑ Together with partner organizations planning, directing and funding of health care and social services for those in need of care
 - ❑ Elderly people, people with disabilities, homeless people, debtors
 - ❑ Funding for organizations/projects **AND** individuals

Services for people with disabilities (FSW)

Koordinationsstelle
Jugend - Bildung - Beschäftigung

- **Counseling centers**
- **Early intervention & school**
 - Diagnostic clinics for developmental disorders
- **Activities of daily living**
 - Personal assistance at home, meals on wheels, cleaning services etc.
- **Assisted living**
 - Fully or partly assisted living
- **Mobility & transport**
 - Orientation training, transport services etc
- **Aids & Tools**
 - Excluding those for educational/ employment purposes

Services for people with disabilities (FSW)

Koordinationsstelle
Jugend - Bildung - Beschäftigung

-
- **Education & work**
 - Occupational therapy
 - Educational subsidies
 - Professional qualification
 - Inclusive training (prolonged or partial apprenticeship)
 - Subsidy of labor expenses

-
- Central point of contact for people with disabilities

 - **Major focus:** vocational integration of people with disabilities
 - Subsidies for employers/employees
 - Activities within regulations on the equality of treatment of people with disabilities / employment of people with disabilities
 - Social compensation benefits
 - **Focus:** transition from education to employment – vocational inclusion of adolescents/young adults with disabilities

Disability equality package (BSB)

**Koordinationsstelle
Jugend - Bildung - Beschäftigung**

-
- Protection & action against discriminatory practices in:
 - Daily life - e.g. access
 - Employment

 - Resolution/Reconciliation meetings
 - Attempt to find out of court solutions
 - Before compensation for damages is negotiated

Act on the employment of people with disabilities (BSB)

Koordinationsstelle
Jugend - Bildung - Beschäftigung

- Status of „preferred person with a disability“
 - 50% disability, EU/EEA, availability to the labour market

- Obligation to hire people with disabilities
 - 25 employees – 1 employee with a disability
 - Equalization tax: 226E (2011)

- Special protection of employment contracts
 - Employment termination: approval of committee needed

- Subsidies for employees/employers

Inclusion of adolescents with disabilities into the job market

- Target group: 15-25 years

- **Objective:**
 - An individually adaptable path of measures that lead to vocational inclusion
 - Support at different stages of this process depending on each person's individual needs
 - Different types of measures (i.e. projects)

-
- **Clearing & job assistance for adolescents**
 - At the point of transition from school; identification of strengths/weaknesses & needs—results in individual development plan
 - **Job assistance:** finding appropriate education, training or employment
 - Responsibilities determined by school location and target group (e.g. ADHD)

Vocational inclusion measures II

Koordinationsstelle
Jugend - Bildung - Beschäftigung

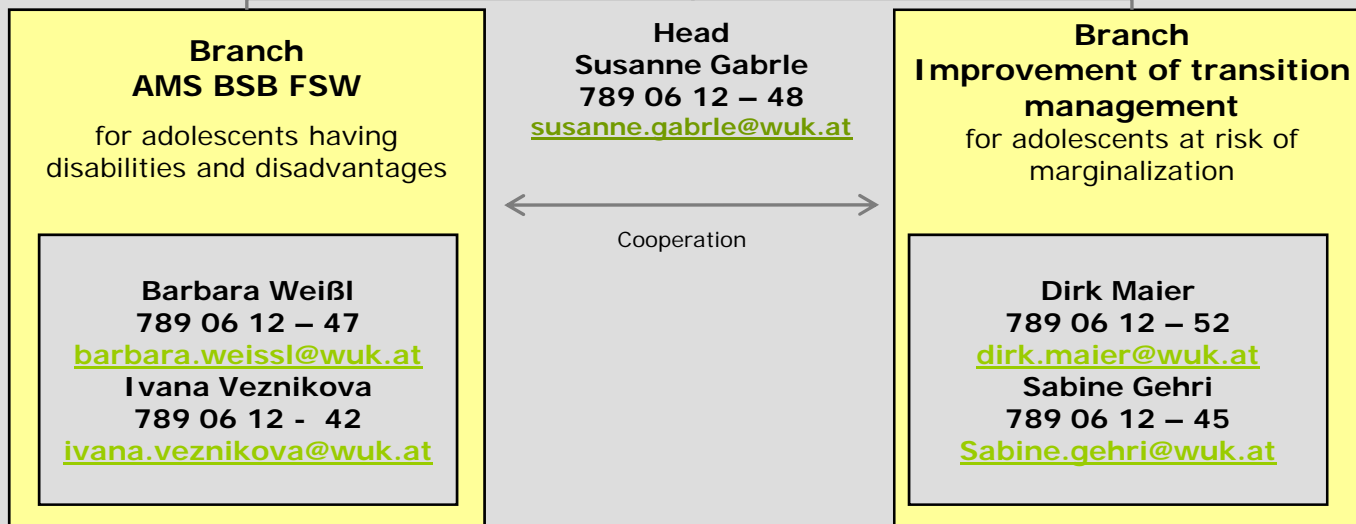
- **Orientation, qualification, maturation:**
 - Increase awareness of capabilities, interests
 - General vocational/career guidance
 - Acquisition of specific prerequisites and skills
 - Internships

- **Inclusive professional training**
 - Prolonged apprenticeship
 - Partial apprenticeship
 - Accompanying assistance

**Koordinationsstelle
Jugend - Bildung - Beschäftigung**

**Coordination agency
Adolescence – Education -
Employment
for adolescents below age 25**

Stutterheimstrasse 16-18/Stg.3/1.107
1150 Wien
www.koordinationsstelle.at



Steering group:

Commissioned by representatives of the Public Employment Service, Federal Social Office & Vienna Social Fund

Major objective:

Improved adjustment of measures/projects for adolescents with disabilities as well as those who experience disadvantages

- **Collection, analysis & update of relevant information**
 - Overview of vocational inclusion measures for adolescents with disabilities, reports, data analysis in terms of specific target groups

- **Information management**
 - Improved access to information for those working in the field; organization of information & expert meetings

- **Enhancement of communication across funding bodies**
 - Exchange on prospective projects & changes in the field of vocational inclusion; organization of meetings & work groups; unification of data collection & definitions

Branch Transition Management

**Koordinationsstelle
Jugend - Bildung - Beschäftigung**

Funded by BMASK and ESF in December 2009 until the end of 2011

Steering group: **AMS, BSB, FSW, MA 13 (youth department), SSR für Wien (Vienna school board), waff (Vienna Employment Promotion Fund)**

Tasks:

Heightened transparency of support services:

Better overview of projects and services concerning the transition from school to work or professional training for adolescents at risk of marginalization

Information for professionals in the field:

Ongoing improvement of disseminators' level of information (i.e. counselors, staff members in youth work, teachers etc.)

Improved cooperation and coordination:

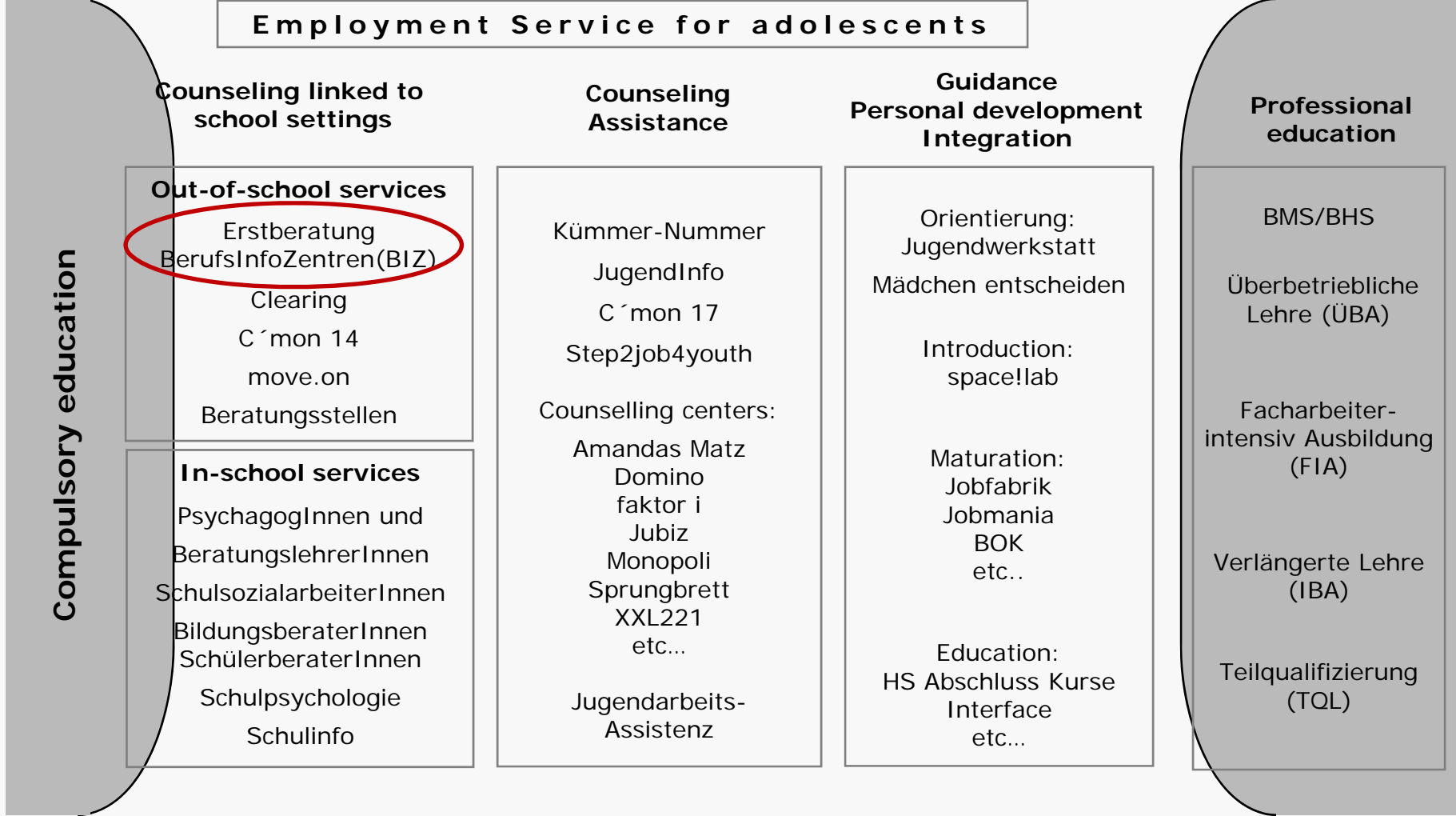
Support of service providers and actors in improving transition from school to work and reducing drop-out rates. This includes building up a network of supporting organizations, local networks in two districts as well as conducting cooperation workshops.

Encouragement of communication across funding bodies:

Adjustment of activities within regular meetings of the steering group.

Labour market and initial vocational training

Employment Service for adolescents



Schule	Schülerinnen- und BildungsberaterInnen, BO-KoordinatorInnen, Schulpsychologie, BeratungslehrerInnen/PsychologInnen, Schulsozialarbeit, Schulinfo für MigrantInnen
Allgemeinbildende höhere Schulen	
Integrationsklassen	
Berufsbildende mittlere und höhere Schulen	
Schulungszentrum Ungargasse	
Berufsschulen	
Polytechnische Schulen	
Fachmittelschulen	
Kooperationsklassen NQL - Klassen	
Kooperative Mittelschulen Neue Wiener Mittelschulen	
Integrationsklassen	
Sonderpädagogische Zentren (SPZ)	
Berufsvorbereitungs-Lehrgänge (BVL)	
HS-Abschluss Klassen	

Beratung in der Schule
Case Management
c'mon 14
m.o.v.e. on
Clearing mit angeschlossener Jugendarbeits-Assistenz
WUK Domino
in.come
LEB
WUK miko
Wien Work
WUK faktor.c
WITAF
ÖBSV
WUK Clearing Plus
ADHS
in der Berufsschule
KUS

AMS Jugendliche BIZ Berufsinformationszentren		
Beratung		
Kümmers-Nummer	Jugend-info	BIWI
Amandas Matz	Sprungbrett	ABZ
WUK faktor.i Info-Zentrum	BIV - integrativ	XXL 221
WUK Monopoli	Jubiz	Rebas
BZ für MigrantInnen	technopool	Bildungsberatung Wien
Begleitende Unterstützung		
Case Management		
c'mon 17	c'monAPP	Step2job 4youth
Jugendarbeitsassistenten		
Arbeitsassistenten		
Berufsausbildungsassistenten		
Persönliche Assistenz am Arbeitsplatz		
Jobcoaching		
Vermittlungsorientierte Integrationsbegleitung		

Lehr- und Berufsausbildung		
Überbetriebliche Lehrausbildung (ÜBA)	Integrative Berufsausbildung (IBA) – überbetrieblich	
ARGE WIFI ipcenter	BFI	JaW Weidinger
IBIS Acam	JaW	IBIS ACAM Basic Plus (TQL)
Kapsch	Murad & Murad	Wien Work IBA
update training	Weidinger & Partner	IBA ÖBB
		ÖBB ♀
		Lehre Siemens

Bildung		
Lernhilfe	Basisbildung Sprachförderung	HS-Abschluss
Interface	JUBIZ	ABZ BFI
Migra		WUK m.power NQL
VHS ISIS	Interface	UKI VHS
WIFI	Jugend Bildungs Werkstatt	Berufsreifeprüf.
Projekt A-Z	Jugend college	VHS

Orientierung / Heranführung / Nachreifung				
Next Level	BIKU Treff	BOCO	BOK/ BOK Gastro	Caritas AltenhelferIn
Equalizent	Gartenprojekt MA 42	JAWA Next	Jobfabrik	Jobmania
Jugend Werkstatt	Julia	KOMFlex	Potenzial Jugend	Mädchen entscheiden
MIT Mädchen In Technik	Meine Chance	BPA BBRZ	Prima Donna	Synapse
Projekt Handwerk	spacelab	Unik.at	Absprung	ITA Berufsfitt
dorothea	IBBV Wien Work	Job Inklusiv	On the Job	VIA

Angebotslandschaft für Jugendliche, Wien 2011
www.koordinationsstelle.at

Stand April 2011

Offene Jugendarbeit					
Come In	EFJUCA	Freiraum	IFP	Mädchencafé	Back Bone
Jugend in Meidling	Juvivo	KIDDY & CO	Kinderfreunde	Verein Förder. Spielkultur	Balu & Du
Multi Kult. Netzwerk	*PEPPA	Rettet das Kind	Verein Bahnfrei!	Zentrum Aichholzgasse	Bassena Stuwerviertel
Verein Wr. Jugendzentren	Wiener Familienbund	WienXtra	Zeit!Raum		

Tagesstruktur (§9 Chancengleichheitsgesetz Wien)					
assist	Band-gesellschaft	Comenius Institut	HABIT	Jugend am Werk (JaW)	Lebens-hilfe
Balance	Caritas	GIN	Humanisierte Arbeitsstätte	LOK	OPUS
			ITA gGmbH	KoMIT	ÖVSE
				ÖHTB	Rainmans Home
					Wiener Sozialdienste

Further information and material:

- „Project landscape“ –
Overview of vocational inclusion services/projects for adolescents below age 25 in Vienna
- Service catalogue - Graph
- Service catalogue – information related to services
- Information sheets of diverse projects

Go to:

www.koordinationsstelle.at